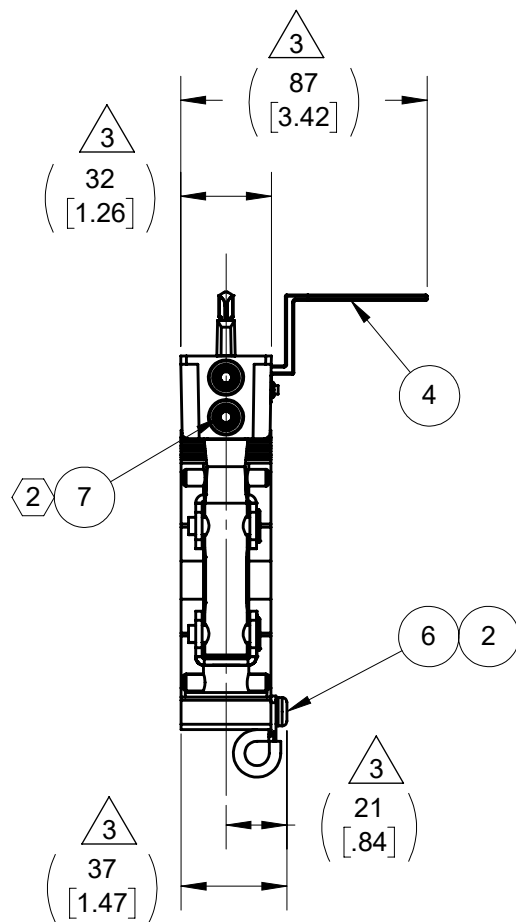


NOTES:

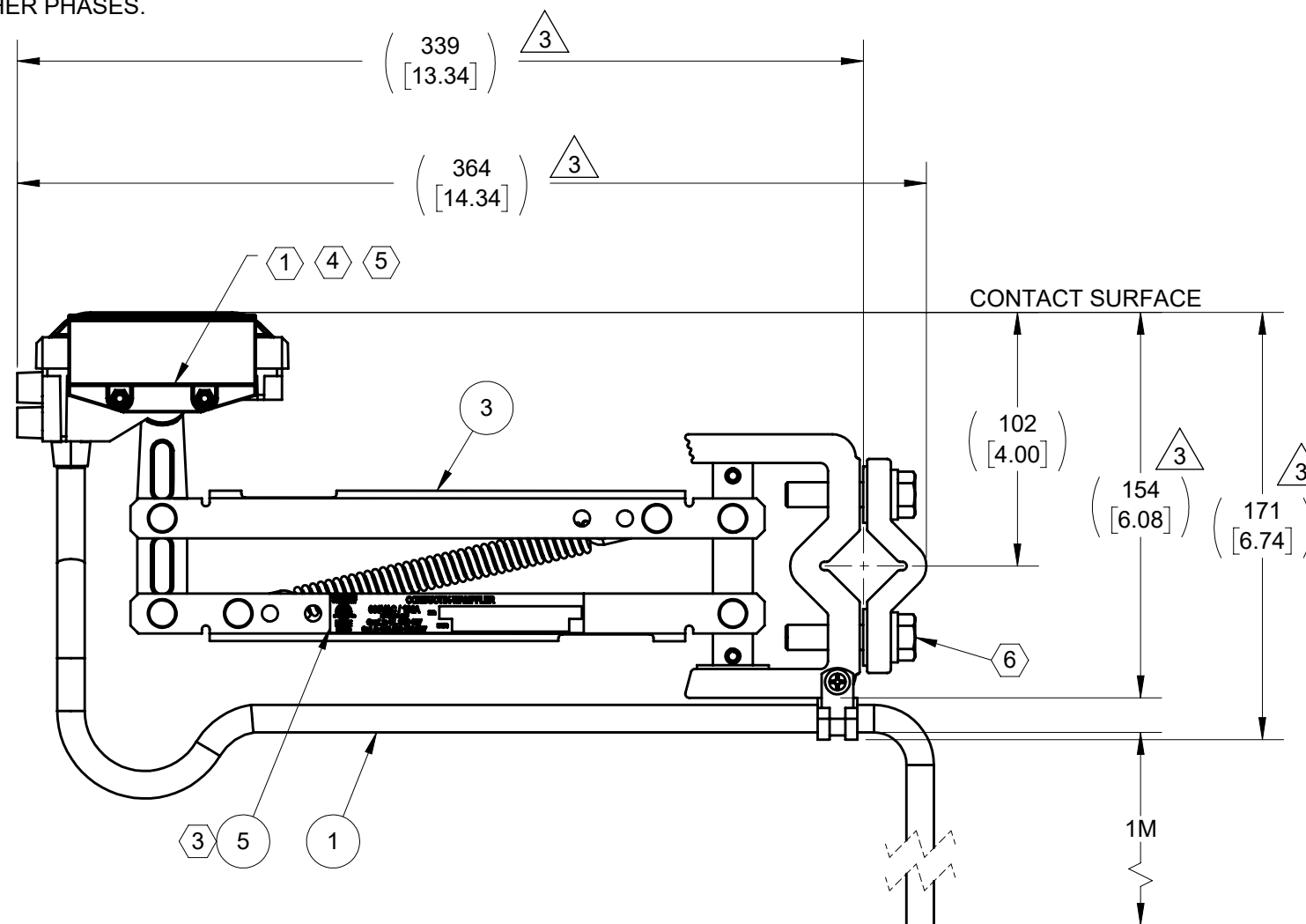
- ① GROUND FLAG SUPPLIED AS A KIT TO BE INSTALLED AT CUSTOMER SITE.
- ② TORQUE TO 2.83 N-M (25 IN-LBS).
- ③③ REMOVE ETL STICKER FROM COLLECTOR, IF PRESENT, AND REPLACE WITH ETL STICKER IN BOM.

INSTALLATION NOTES:

- ④ WHEN INSTALLING THE GROUND INDICATOR FLAG, ORIENT THE GROUND FLAG AWAY FROM THE OTHER PHASES.
- ⑤ TORQUE TO 0.9 N-M (8 IN-LB)
- ⑥ TORQUE TO 33.9 N-M (300 IN-LB)



SHOWN WITHOUT CABLE FOR CLARITY



SPECIFICATIONS

COLLECTOR SETTING HEIGHT	102.0 mm	4.00"
CONTACT FORCE AT SETTING HEIGHT	20-36 N	4.5-8.0 LBS
LATERAL WORKING RANGE	±63.5 mm	±2.50"
VERTICAL WORKING RANGE	+70.0 mm	+2.75"
	③ -31.7 mm	-1.25"
WEIGHT	2.0 Kg	4.4 LBS
MAXIMUM SPEED	270 M/MIN	900 FT/MIN
MAXIMUM CURRENT RATING	100A	100A
MAXIMUM CONTINUOUS WORKING TEMPERATURE	54 °C	130 °F
MINIMUM CONTINUOUS WORKING TEMPERATURE	-40 °C	-40 °F
MOUNTING SQUARE BAR SIZE	25.4 mm	1.00"
CABLE SIZE (EXTRA FLEXIBLE)	34 mm ²	#4 AWG
MAXIMUM SHOE WEAR	5.3 mm	.21"

③	7	XA-592664	SCREW SET M8-1.25 X 10 EXT TIP SST		1	PC
③	6	XA-596130	SCREW M5X0.8 X 16MM RH PHP THREAD-FORM		1	PC
	5	XA-591113	LABEL ETL FOR 100A SL2 COLL HARLAN		1	PC
	4	XA-590062	KIT SL2 GROUND INDICATOR/DEFLECTOR	①	1	PC
	3	XA-SL2C-100S-0M	COLLECTOR 100A SL2 SINGLE		1	PC
③	2	XA-589191	CLAMP CBL 3/8 IN ID X 1/2 IN W		1	PC
	1	XA-595374	CABLE 4AWG 1C 600V 1.37M LG		1	PC
	ITEM	MATERIAL NO. 2	DESCRIPTION	COMMENTS	QTY.	UNIT

STATUS: RELEASED	DESCRIPTION: COLLECTOR SL2 100A SGL GND 1M
ER NO.: ECO-28559	UNLESS OTHERWISE SPECIFIED INTERPRET GEOMETRIC TOLERANCING PER: ASME Y14.5
ER DATE: 01/27/2021	PRIMARY UNITS ARE IN INCH POUND SECONDS SECONDARY UNITS IN MILLIMETERS KILOGRAMS SECONDS
ER ENGR: J NEUMANN	TOLERANCES ARE AS FOLLOWS
ER APPR: R FROST	DECIMAL: X.X ± 0.1 IN (2.5 MM)
DRAWN: K COCHRAN	X.XX ± 0.03 IN (0.8 MM)
DATE: 11/03/2020	X.XXX ± 0.010 (0.25 MM)
APPR: D SAMPSON	ANG. ± 1°
DATE: 11/03/2020	FRAC. ± 1/16
	THREAD CLASS: 2
	ALL DIMENSIONS GREATER THAN 24.00 INCHES HAVE A TOLERANCE OF ± .063 IN UNLESS OTHERWISE SPECIFIED

PROPRIETARY AND CONFIDENTIAL

This drawing and the information shown constitute trade secret and confidential property of Conductix-Wipac, Inc. It is subject to recall, and is loaned for use only in connection with the authorized manufacture or installation of Conductix-Wipac products, and on the condition that it will be treated as confidential and will not be disclosed, published or reproduced in whole or in part, or permitted to be viewed or used by any other party, without specific written permission. Receipt and use of the drawing and information constitutes acceptance and agreement to the above.

10102 F Street
Omaha, NE 68127
800-521-4888

MATERIAL NO. 2: **XA-SL2C-100SG-1M**

REV: **3**

SIZE: B	SCALE: 3:8	WEIGHT(REF): 1.59 KG	SHEET 1 OF 1
----------------	-------------------	----------------------	--------------