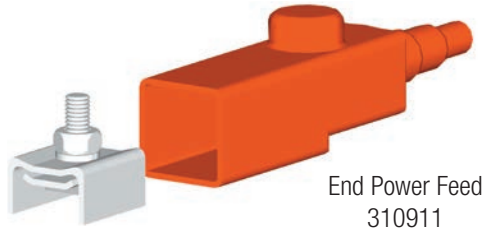


Safe-Lec 2 Hanger Clamps

End Power Feed



The End Power Feed is installed in place of an end cover. Maximum cable connection size: 6 AWG (16mm²). These are suitable for 100A Galvanized Steel Bar only.

Part No.	Wt lb (kg)
310911	0.1 (0.045)

Hanger Clamps Standard

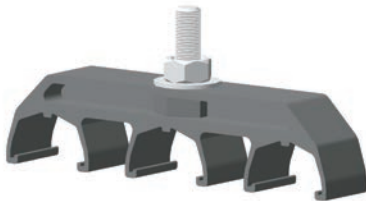
Maximum support bracket spacing is 59.1" (1.5m) Hardware is plated steel unless noted otherwise.



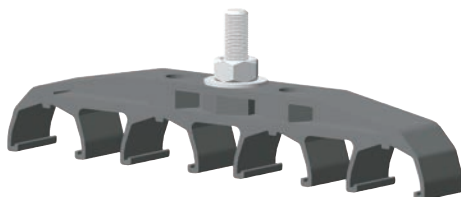
Single Pole Hanger 310824
310919 (stainless steel hardware)



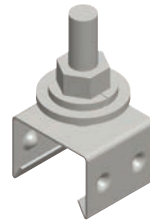
Two Pole Hanger
310882



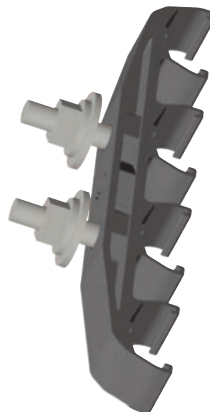
Three Pole Hanger
310861



Four Pole Hanger, Standard Mount
310821 (plated hardware)
39768 (stainless steel hardware)



Stainless Steel Hanger
399416B



Four Pole Hanger, Lateral Mount
310835 (plated hardware)
50120 (stainless steel hardware)

TYPE	Mounting Orientation		Acetyl (Black) 160° Max.	Polycarbonate (Red) 250° Max.	Stainless Steel	Wt lb (kg)
	Standard	Lateral				
Single Pole	X	X	310824	310829	310919	0.18 (0.08)
Two Pole	X	X	310882	310899	-	0.10 (0.045)
Three Pole	X	X	310861	310871	-	0.11 (0.05)
Four Pole	X		310821	310857	39768	0.12 (0.054)
Four Pole		X	310835	310859	50120	0.20 (0.09)
Single Pole	X	X	-	-	399416B	0.07 (0.31)